

Away in a Manger

Walter L. Pelz

$\text{♩} = c. 72$ With tender feeling

Vn.



Organ



Ped.

p

p

Detailed description: This block contains the first system of the score. It features a Violin (Vn.) part on a single staff and an Organ part on two staves. The Violin part begins with a treble clef, a key signature of one flat (B-flat), and a 3/4 time signature. The Organ part also uses a treble and bass clef with the same key signature and time signature. The Organ part includes a 'Ped.' (pedal) marking. Dynamics include a piano (*p*) marking under the Violin part and another piano (*p*) marking under the Organ part. The music is characterized by flowing eighth and sixteenth notes with various phrasing slurs.

Vn.



Choir



Organ



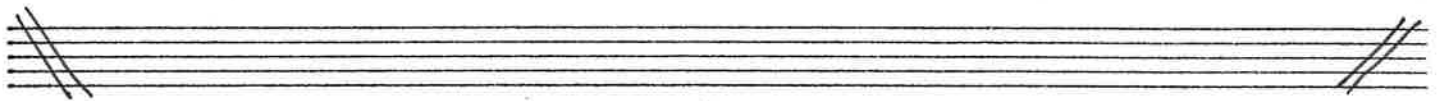
mp

1. A-way in a man-ger, no

Detailed description: This block contains the second system of the score. It features a Violin (Vn.) part on a single staff, a Choir part on a single staff, and an Organ part on two staves. The Violin part continues with the same notation as the first system. The Choir part begins with a treble clef, a key signature of one flat, and a 3/4 time signature. The Organ part continues with the same notation as the first system. A dynamic marking of mezzo-piano (*mp*) is placed above the Choir part. The lyrics '1. A-way in a man-ger, no' are written below the Choir part. The Organ part includes a 'Ped.' (pedal) marking. The music continues with flowing eighth and sixteenth notes and phrasing slurs.

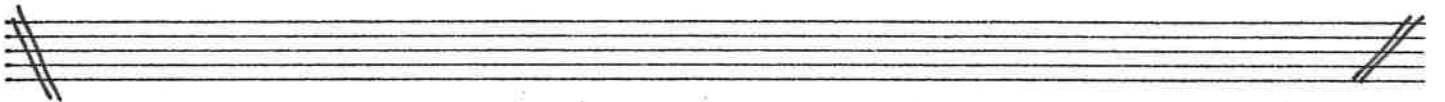
Copyright Walter L. Pelz © 1979

crib for his bed, The lit-tle Lord Je-sus laid down his sweet head; The



stars in the bright sky looked down where he lay, The lit-tle Lord Je-sus a-

sleep on the hay.



Vn.

S.
A.

2. The cat-tle are low-ing, the poor ba-by wakes, But

T.
B.

Organ

Vn.

S.
A.

lit-He Lord Je-sus no cry-ing he makes. I love thee, Lord Je-sus; look

T.
B.

Poco rit.

Poco rit.

down from the sky, And stay by my cradle Till morn-ing is

Handwritten musical notation for the first system. It consists of three staves: a vocal line in treble clef, a piano accompaniment in treble clef, and a piano accompaniment in bass clef. The key signature has one flat (B-flat). The vocal line begins with a half note G4. The piano accompaniment features a steady bass line of quarter notes in the bass clef and a treble clef line with rests and occasional notes. The word "nigh." is written below the vocal line.

a tempo

Handwritten musical notation for the second system. It consists of three staves: a vocal line in treble clef, a piano accompaniment in treble clef, and a piano accompaniment in bass clef. The vocal line contains several measures of music, including eighth and quarter notes. The piano accompaniment continues with a steady bass line and chords in the treble clef.

Handwritten musical notation for the third system. It consists of three staves: a vocal line in treble clef, a piano accompaniment in treble clef, and a piano accompaniment in bass clef. The vocal line begins with a triplet of notes. The lyrics "3. Be near me, Lord" are written below the vocal line. A dynamic marking of *p* (piano) is placed above the first note of the triplet. The piano accompaniment continues with a steady bass line and chords in the treble clef.

Handwritten musical notation for the fourth system. It consists of three staves: a vocal line in treble clef, a piano accompaniment in treble clef, and a piano accompaniment in bass clef. The vocal line continues with several measures of music. The piano accompaniment continues with a steady bass line and chords in the treble clef.

p

Je - sus; I ask thee to stay close by me for ev - er and

This system contains the first two staves of music. The top staff is a vocal line starting with a piano (*p*) dynamic marking. The bottom staff is the piano accompaniment. The lyrics 'Je - sus; I ask thee to stay close by me for ev - er and' are written below the vocal line.

This system contains the next two staves of music, which are the piano accompaniment for the first system. It features chords and melodic lines in both the treble and bass clefs.

love me, I pray. Bless all the dear child-ven in thy ten - der

This system contains the third and fourth staves of music. The top staff is a vocal line with lyrics 'love me, I pray. Bless all the dear child-ven in thy ten - der'. The bottom staff is the piano accompaniment. There are double bar lines with repeat dots at the beginning and end of this system.

This system contains the final two staves of music, which are the piano accompaniment for the third system. It concludes with a bass line that has a '6' written below it, possibly indicating a first ending or a specific fingering.

care, And take us to hea-ven, to live with thee

This system contains the first two staves of a musical score. The top staff is a vocal line with lyrics: "care, And take us to hea-ven, to live with thee". The bottom staff is a piano accompaniment. The music is in a key with one flat (B-flat) and a common time signature. The vocal line features a melodic line with some grace notes and a final fermata. The piano accompaniment consists of chords and moving lines in both hands.

there.

dim - - - - - *pp*

pp *dim* *pp*

This system contains the second two staves of the musical score. The top staff continues the vocal line with the lyric "there." and includes dynamic markings *dim* and *pp*. The bottom staff continues the piano accompaniment with dynamic markings *pp*, *dim*, and *pp*. The system concludes with a double bar line.