

Vom Himmel hoch
Laudamus

16

Handwritten musical notation for system 16, measures 1-4. The treble clef staff contains a sequence of notes, with a triplet of eighth notes in measure 3. The bass clef staff contains a sequence of notes, with triplets of eighth notes in measures 2, 3, and 4. The system concludes with a double bar line and repeat dots.

17

Handwritten musical notation for system 17, measures 1-4. The treble clef staff contains a sequence of notes with slurs. The bass clef staff begins with a 4-measure rest, followed by a sequence of notes with slurs. The system concludes with a double bar line and repeat dots.

18

Handwritten musical notation for system 18, measures 1-4. The treble clef staff contains a sequence of notes with slurs. The bass clef staff begins with a 4-measure rest, followed by a sequence of notes with slurs. The system concludes with a double bar line and repeat dots.

19

Handwritten musical notation for system 19, measures 1-4. The treble clef staff contains a sequence of notes with slurs. The bass clef staff begins with a 4-measure rest, followed by a sequence of notes with slurs. The system concludes with a double bar line and repeat dots.

20

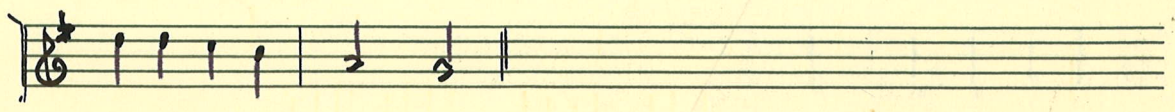
Handwritten musical notation for system 20, measures 1-4. The treble clef staff contains a sequence of notes with slurs and triplets. The bass clef staff begins with a 4-measure rest, followed by a sequence of notes with slurs. The system concludes with a double bar line and repeat dots.

21

Handwritten musical notation for system 21, measures 1-4. The treble clef staff contains a sequence of notes with slurs. The bass clef staff begins with a 4-measure rest, followed by a sequence of notes with slurs. The system concludes with a double bar line and repeat dots.



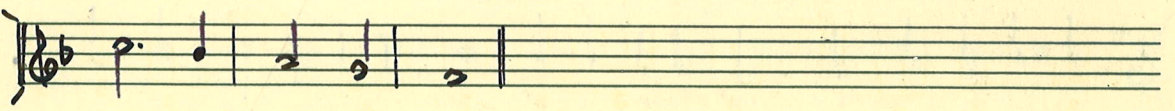
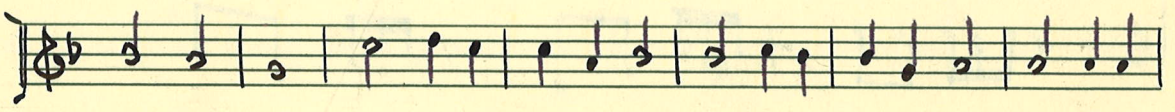
33



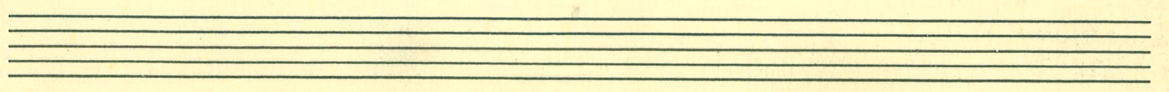
34



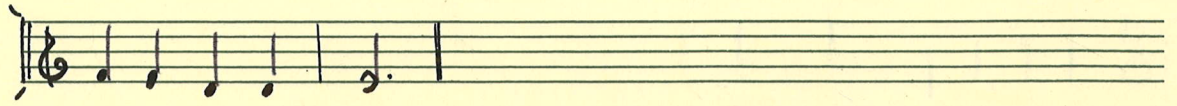
35



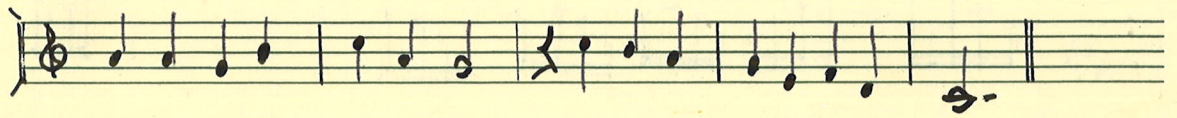
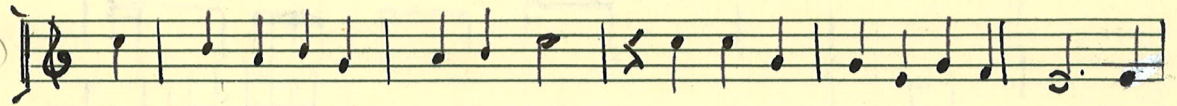
36



37



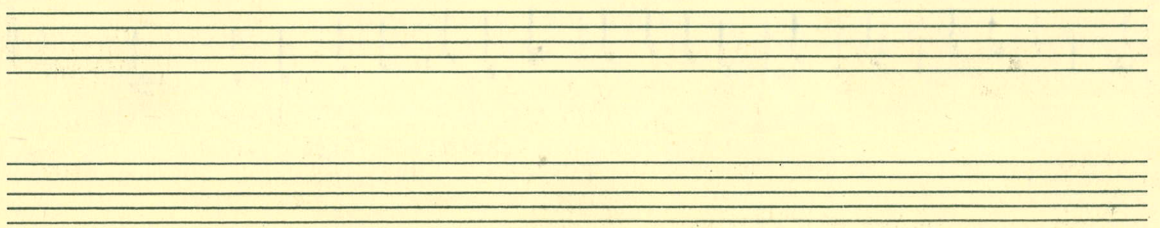
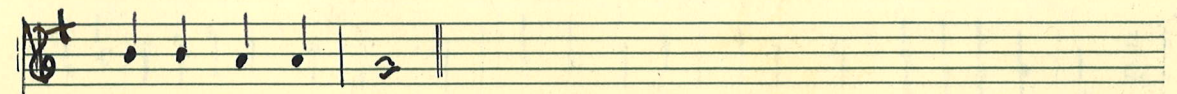
38



41



42



43

Handwritten musical notation for measures 1-2. The top staff is in treble clef with a key signature of one sharp (F#). The bottom staff is in bass clef with a key signature of one sharp (F#). The music includes various note values and rests.

Handwritten musical notation for measures 3-4. The notation continues with similar rhythmic patterns and note values.

Handwritten musical notation for measures 5-6. The melodic line continues across these measures.

Handwritten musical notation for measures 7-8. The notation features a steady rhythmic accompaniment.

Handwritten musical notation for measures 9-10. The notation continues with similar rhythmic patterns.

Handwritten musical notation for measures 11-12. The top staff is in treble clef with a key signature of one sharp (F#).

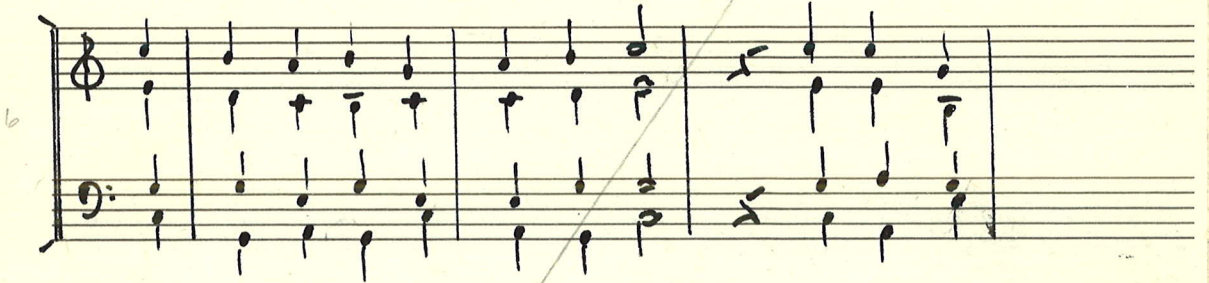
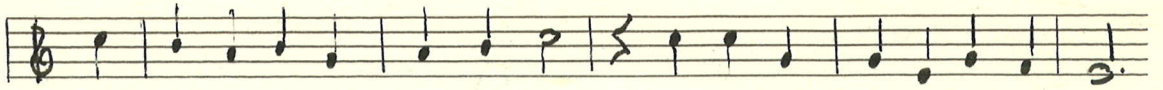
Handwritten musical notation for measures 13-14. The bottom staff is in bass clef with a key signature of one sharp (F#).

Handwritten musical notation for measures 15-16. The notation continues with similar rhythmic patterns.

Handwritten musical notation for measures 17-18. The top staff is in treble clef with a key signature of one sharp (F#).

Handwritten musical notation for measures 19-20. The notation continues with similar rhythmic patterns.

Handwritten musical notation for measures 21-22. The top staff is in treble clef with a key signature of one sharp (F#).



26

27

28

29

30

31

32

22

23

24

Handwritten musical notation for the first system. The treble clef staff contains a single quarter note. The bass clef staff contains a complex rhythmic pattern of eighth notes, with some notes marked with a '+' sign.

Handwritten musical notation for the second system. The treble clef staff contains a whole note. The bass clef staff contains a series of eighth notes, with some notes marked with a '+' sign.

Handwritten musical notation for the third system. The treble clef staff contains a quarter note. The bass clef staff contains a complex rhythmic pattern of eighth notes, with some notes marked with a '+' sign.

Handwritten musical notation for the fourth system. The treble clef staff contains a quarter note. The bass clef staff contains a series of eighth notes, with some notes marked with a '+' sign.

Handwritten musical notation for the fifth system. The treble clef staff contains a whole note. The bass clef staff contains a complex rhythmic pattern of eighth notes, with some notes marked with a '+' sign.

Handwritten musical notation for the sixth system. The treble clef staff contains a quarter note. The bass clef staff contains a series of eighth notes, with some notes marked with a '+' sign and triplets indicated by the number '3'.

25